

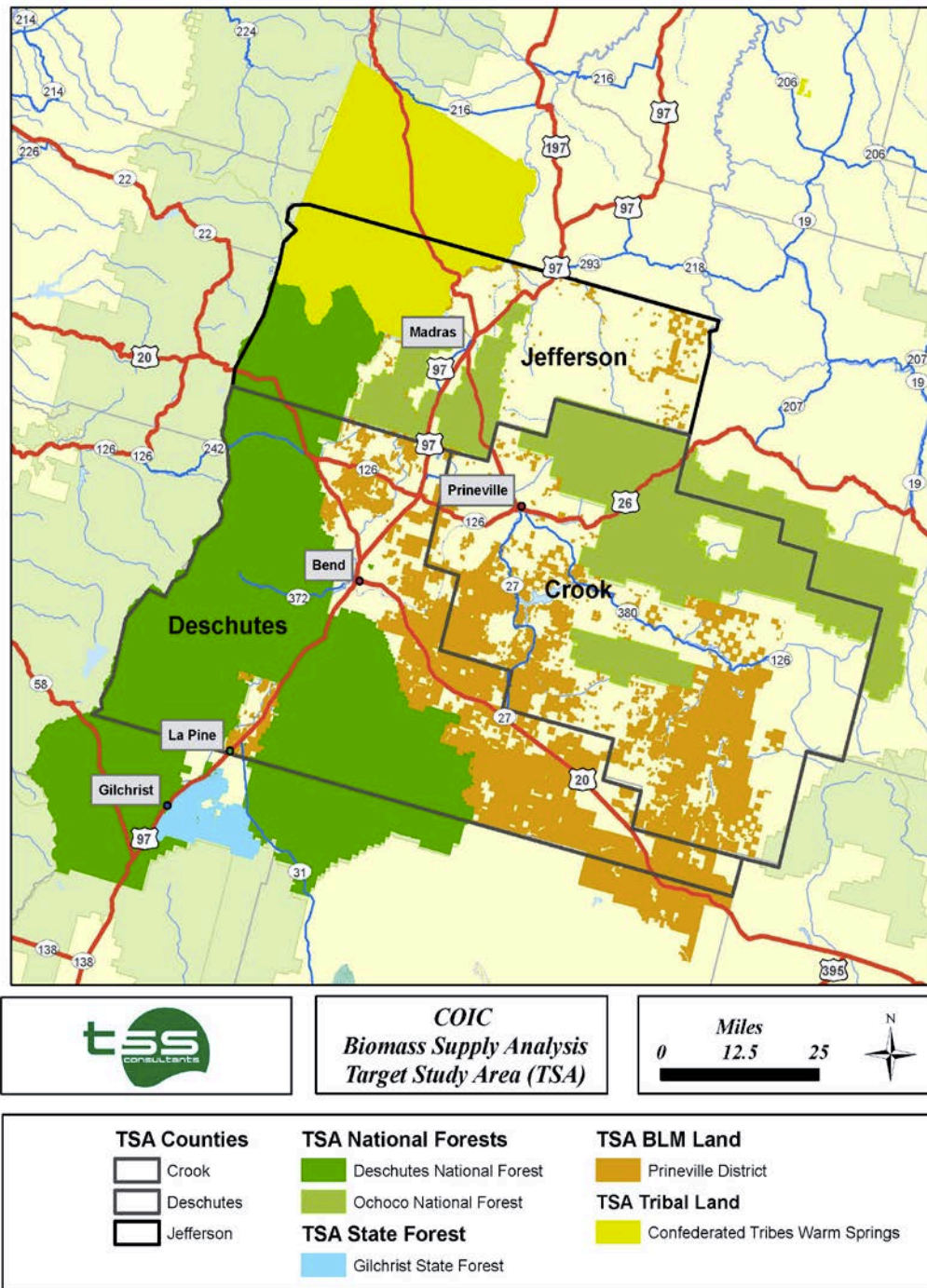


Central Oregon Intergovernmental Council  
 334 NE Hawthorne Ave  
 Bend, OR 97701

## CENTRAL OREGON BIOMASS SUPPLY AVAILABILITY ANALYSIS

### *Project Overview*

The Central Oregon Intergovernmental Council (the Council) has retained TSS Consultants (TSS) to conduct a woody biomass supply availability analysis for the central Oregon region. Posted below is a map that highlights the target study area.



### **Analysis Objectives**

The Council is seeking an updated analysis focused on the sustainably available volume, characteristics, sources and costs (collection, processing and transport) of biomass supplies in Central Oregon. Potential value-added markets for the biomass include biomass heat, power, specialty chemicals and advanced biofuels.

### **Types of Woody Biomass Considered**

Woody biomass considered includes:

- Forest residuals from forest management operations (limbs, tops, small diameter material)
- Rangeland restoration residuals (western juniper removals)
- Urban wood waste (tree trimmings, pallets, clean construction wood)
- Hazardous fuels and other small diameter timber from removal projects
- Forest products manufacturing residuals (sawdust, bark, shavings)

### **Timing**

Data collection will seek to conclude by mid-April. The completed analysis and report should be available by July 1, 2016

### **Key Contacts**

COIC, Kiley Rucker-Clamons, [krucker-clamons@coic.org](mailto:krucker-clamons@coic.org)

TSS Consultants, Tad Mason, [tmason@tssconsultants.com](mailto:tmason@tssconsultants.com)

TSS Consultants, Katherine Mitchell, [katherine@resourcechange.org](mailto:katherine@resourcechange.org)